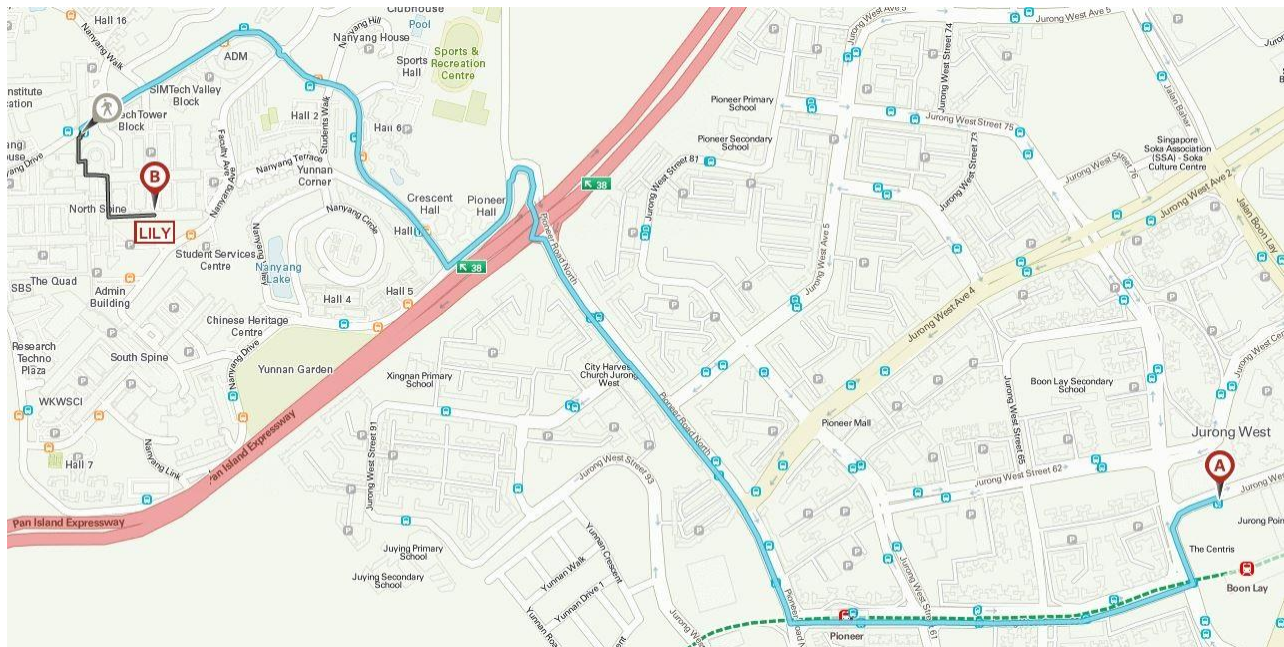


GETTING TO THE LILY RESEARCH CENTRE BY PUBLIC TRANSIT

1. Take the MRT East-West (Green) line and alight at Boon Lay MRT Station.
2. Transfer to Singapore Bus Service (SBS) bus service no 179 at the Boon Lay bus interchange (stop ID 22009), which is linked to the MRT station by the Jurong Point shopping centre.
3. Alight at Nanyang Drive, Lee Wee Nam Lib, 11 stops later (stop ID 27211).

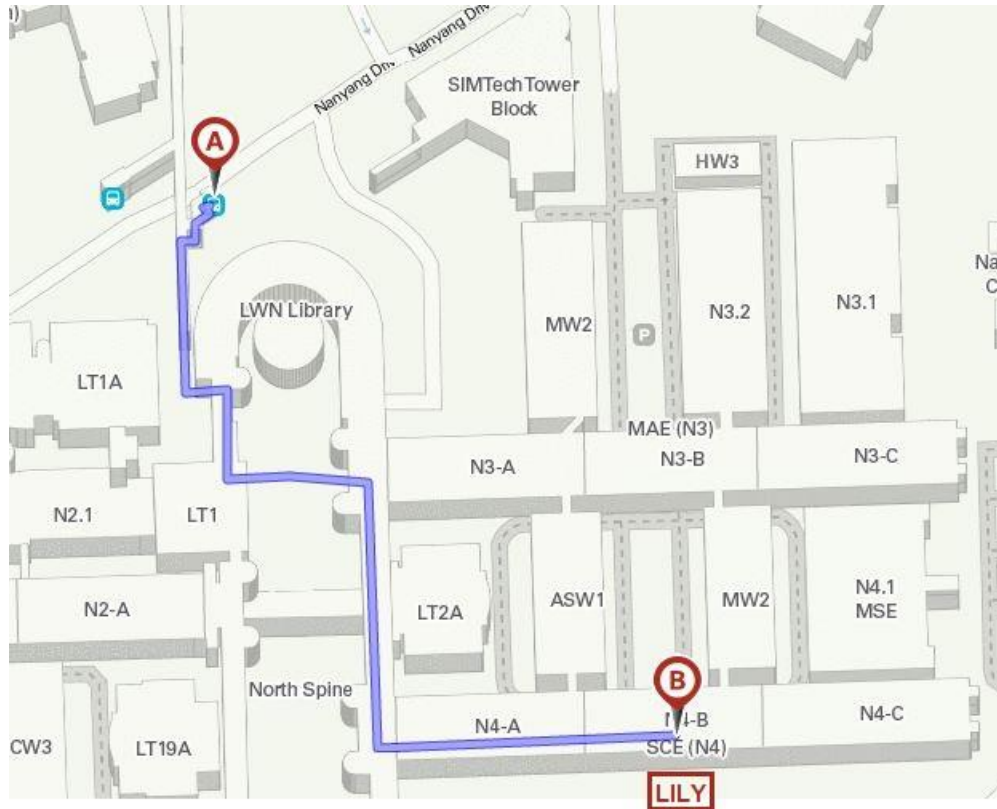


Getting to LILY by public transit

From there, walk for about 5 min to the LILY Centre:

1. Head south-west (same direction as the bus), towards the staircase. Climb the staircase.
2. At the top of the stairs, turn left.
3. At the end of the path, turn right, and then left. After walking for a few meters, you should see a McDonald's. Turn left before the area that contains tables.
4. Walk until you reach a fork. At the fork, turn right.
5. Pass by the Cheers and then by Lift NS2-2.
6. When you reach Lecture Theatre LT 19A, turn left and go across the car park.
7. Enter the Block N4 School of Computer Engineering building.
8. After entering the building, turn right. Turn left, and then left again. You should come across 2 elevators (lifts N4-1 and N4-2).

9. Take one of the elevators down to Level B3.
10. Turn left when exiting the elevator, and then turn left immediately.
11. You are there!



Walking to LILY from the public transit bus stop



The entrance of the LILY Research Centre